



**PRODUCT OVERVIEW**  
**2022 - 2023**

# WARNING LAMPS | BEACONS

## R65 LED FLEXIBLE POLE MOUNT



12/24V • 12 LEDs  
ECE Reg 65 • Rated IP67  
H: 211mm • Base: Ø116mm  
Functions: Single, Double,  
Quad, Revolving



R65 STANDARD CA 7066

## R65 LED 3 BOLT MOUNT



12/24V • 12 LEDs  
ECE Reg 65 • Rated IP67  
H: 125mm • Base: Ø148mm  
Functions: Single, Double,  
Quad, Revolving



R65 STANDARD CA 7067

## R65 LED MAGNETIC MOUNT



12/24V • 12 LEDs  
ECE Reg 65 • Rated IP67  
H: 131mm • Base: Ø148mm  
Functions: Single, Double,  
Quad, Revolving



R65 STANDARD CA 7068

## R65 LED 3 BOLT MOUNT



10/30V • 32 Amber LEDs  
ECE Reg 10/65 • Rated IP67  
H: 150.5mm • Base: Ø165mm  
5 Flash Patterns • 28w



R65 STANDARD CA 7051

## R65 LED SINGLE POLE MOUNT



10/30V • 32 Amber LEDs  
ECE Reg 10/65 • Rated IP67  
H: 150.5mm • Base: Ø165mm  
5 Flash Patterns • 28w



R65 STANDARD CA 7052

## R65 LED MAGNETIC MOUNT



10/30V • 32 Amber LEDs  
ECE Reg 10/65 • Rated IP67  
H: 150.5mm • Base: Ø165mm  
5 Flash Patterns • 28w



R65 STANDARD CA 7053

## R65 LED POLE MOUNT



10/30V • 32 Amber LEDs  
ECE Reg 10/65 • Rated IP67  
H: 201mm • Base: Ø118mm  
5 Flash Patterns • 28w



R65 STANDARD CA 7054

## R65 LED MAGNETIC MOUNT



10/30V • 36 Amber LEDs  
ECE Reg 10/65 • Rated IP67  
H: 100mm • Base: Ø130mm  
7 Flash Patterns • 18w



R65 COMPACT / MINI CA 7043

## R65 LED 3 BOLT MOUNT



10/30V • 36 Amber LEDs  
ECE Reg 10/65 • Rated IP67  
H: 100mm • Base: Ø130mm  
7 Flash Patterns • 18w



R65 COMPACT / MINI CA 7045

## R65 LED SINGLE BOLT MOUNT



12/24V • 8 LEDs • 24w  
ECE Reg 10/65 • Rated IP56  
H: 164mm • Base: Ø129mm  
Functions: 360° Revolving,  
Intermittent Flash



R65 COMPACT CA 8082

## R65 LED MAGNETIC MOUNT / 3 BOLT MOUNT



12/24V • 8 LEDs • 24w  
ECE Reg 10/65 • Rated IP56  
H: 135mm • Base: Ø142mm  
Functions: 360° Revolving,  
Intermittent Flash



R65 COMPACT CA 8083

## R65 LED POLE MOUNT



12/24V • 8 LEDs • 24w  
ECE Reg 10/65 • Rated IP56  
H: 208mm • Base: Ø129mm  
Functions: 360° Revolving,  
Intermittent Flash



R65 COMPACT CA 8084

## R65 LED SINGLE BOLT MOUNT



12/24V • 36 LEDs • 54w  
ECE Reg 10/65 • Rated IP56  
H: 132mm • Base: Ø115mm  
Functions: Single,  
Double, Quad



R65 COMPACT CA 8122

## R65 LED MAGNETIC MOUNT



12/24V • 36 LEDs • 54w  
ECE Reg 10/65 • Rated IP56  
H: 104mm • Base: Ø115mm  
Functions: Single,  
Double, Quad



R65 COMPACT CA 8123

## R65 LED POLE MOUNT



12/24V • 36 LEDs • 54w  
ECE Reg 10/65 • Rated IP56  
H: 179mm • Base: Ø115mm  
Functions: Single,  
Double, Quad



R65 COMPACT CA 8124

WARNING LAMPS

# WARNING LAMPS | BEACONS

## R65 LED 3 BOLT MOUNT



12/24V • 36 LEDs • 54w  
ECE Reg 10/65 • Rated IP56  
H: 68mm • Base: Ø136mm  
Functions: Single,  
Double, Quad

**TREKKER**

R65 COMPACT **CA 8125**

## R65 LED SINGLE BOLT MOUNT



12/24V • 36 LEDs • 54w  
ECE Reg 10/65 • Rated IP56  
H: 146mm • Base: Ø125mm  
Functions: Single,  
Double, Quad

**TREKKER**

R65 COMPACT **CA 8185**

## R65 LED MAGNETIC MOUNT



12/24V • 36 LEDs • 54w  
ECE Reg 10/65 • Rated IP56  
H: 117mm • Base: Ø139mm  
Functions: Single,  
Double, Quad

**TREKKER**

R65 COMPACT **CA 8186**

## R65 LED POLE MOUNT



12/24V • 36 LEDs • 54w  
ECE Reg 10/65 • Rated IP56  
H: 193mm • Base: Ø125mm  
Functions: Single,  
Double, Quad

**TREKKER**

R65 COMPACT **CA 8187**

## LED SINGLE BOLT MOUNT



12/24V • 60 LEDs • 30w  
ECE Reg 10 • Rated IP56  
H: 125mm • Base: Ø125mm  
Functions: 360° Revolving,  
Intermittent Flash

**TREKKER**

COMPACT **CA 8182**

## LED MAGNETIC MOUNT / 3 BOLT MOUNT



12/24V • 60 LEDs • 30w  
ECE Reg 10 • Rated IP56  
H: 117mm • Base: Ø139mm  
Functions: 360° Revolving,  
Intermittent Flash

**TREKKER**

COMPACT **CA 8183**

## LED FLEXIBLE POLE MOUNT



12/24V • 60 LEDs • 30w  
ECE Reg 10 • Rated IP56  
H: 193mm • Base: Ø125mm  
Functions: 360° Revolving,  
Intermittent Flash

**TREKKER**

COMPACT **CA 8184**

## R65 LED MAGNETIC MOUNT / RECHARGEABLE



12/24V • 36 LEDs • 54w  
ECE Reg 10/65 • Rated IP66  
H: 98mm • Base: Ø123mm  
4hr Full Charge  
8hr Battery life  
(single flash)

**CA 8190**

## R65 LED MAGNETIC MOUNT



**SIGMA**  
REG 65 BEACON

12/24V • 32 Amber LEDs • 30w  
ECE R10/65 • Rated IP6K9K  
H: 85mm • Base: Ø169mm  
10 Flash Patterns

R65 LOW PROFILE **CA 7050**

## 2 BOLT MOUNT (MINI)



ECE Reg 10  
Rated IP56  
H: 131mm  
Base: 99 x Ø71mm

12/24V LED **CA 7505LED**  
12/110V XENON **CA 7505**

## 3 BOLT MOUNT (MINI)



ECE Reg 10  
Rated IP56  
H: 95mm  
Base: Ø129mm

12/24V LED **CA 7500LED**  
12/110V XENON **CA 7500**

## MAGNETIC MOUNT (MINI)



ECE Reg 10  
Rated IP56  
H: 95mm  
Base: Ø129mm

12/24V LED **CA 7501LED**  
12/110V XENON **CA 7501**

## LED THREE BOLT MOUNT



12/24V • 80 White LEDs  
18w • ECE Reg 10/65  
Rated IP56  
H: 200mm  
Base: Ø142mm

STANDARD **CA 6055C**

## LED SINGLE BOLT MOUNT



12/24V • 80 White LEDs  
18w • ECE Reg 10/65  
Rated IP56  
H: 200mm  
Base: Ø144mm

STANDARD **CA 6056C**

## LED MAGNETIC MOUNT



12/24V • 80 White LEDs  
18w • ECE Reg 10/65  
Rated IP56  
H: 205mm  
Base: Ø142mm

STANDARD **CA 6057C**

## LED FLEXIBLE POLE MOUNT



12/24V • 40 White LEDs  
8w • ECE Reg 10/65  
Rated IP56  
H: 245mm  
Base: Ø130mm

STANDARD **CA 6058C**

WARNING LAMPS

# WARNING LAMPS | BEACONS | ACCESSORIES

## SINGLE BOLT ROTATING



12/24V • Rated IP56  
ECE Reg 10 / 65  
H: 200mm  
Base: Ø142mm  
H1 Halogen Bulb

STANDARD ROTATOR **CA 2040C**

## POLE MOUNT ROTATING



12/24V • Rated IP56  
ECE Reg 10 / 65  
H: 245mm  
Base: Ø128mm  
H1 Halogen Bulb

STANDARD ROTATOR **CA 2050C**

## MAGNETIC MOUNT ROTATING



12/24V • Rated IP56  
ECE Reg 10 / 65  
H: 200mm  
Base: Ø142mm  
H1 Halogen Bulb

STANDARD ROTATOR **CA 2045C**

## LED SINGLE BOLT MOUNT



12/24V • 60 LEDs • 30w  
ECE Reg 10 • Rated IP56  
H: 125mm • Base: Ø125mm  
Functions: 360° Revolving,  
Intermittent Flash



COMPACT **CA 8182G**

## LED MAGNETIC / 3 BOLT MOUNT



12/24V • 60 LEDs • 30w  
ECE Reg 10 • Rated IP56  
H: 117mm • Base: Ø139mm  
Functions: 360° Revolving,  
Intermittent Flash



COMPACT **CA 8183G**

## LED FLEXIBLE POLE MOUNT



12/24V • 60 LEDs • 30w  
ECE Reg 10 • Rated IP56  
H: 193mm • Base: Ø125mm  
Functions: 360° Revolving,  
Intermittent Flash



COMPACT **CA 8184G**

## R65 LED SINGLE BOLT MOUNT



12/24V • 36 LEDs • 54w  
ECE Reg 10/65 • Rated IP56  
H: 132mm • Base: Ø115mm  
Functions: Single,  
Double, Quad



R65 COMPACT **CA 8122R**

## R65 LED MAGNETIC MOUNT



12/24V • 36 LEDs • 54w  
ECE Reg 10/65 • Rated IP56  
H: 104mm • Base: Ø115mm  
Functions: Single,  
Double, Quad



R65 COMPACT **CA 8123R**

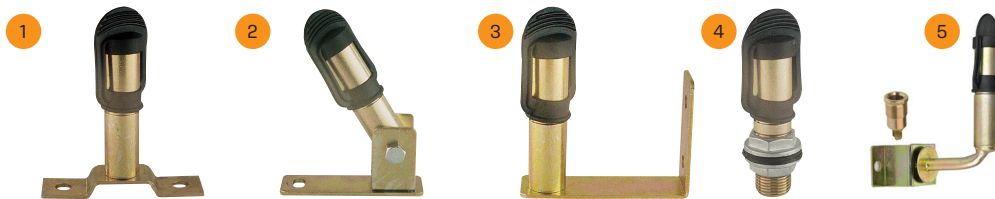
## R65 LED POLE MOUNT



12/24V • 36 LEDs • 54w  
ECE Reg 10/65 • Rated IP56  
H: 179mm • Base: Ø115mm  
Functions: Single,  
Double, Quad



R65 COMPACT **CA 8124R**



## BEACON POLE MOUNT ADAPTORS

Code	Fixing	Profile	Type
1 CA 6600A	2 Bolt	'T' Type	Fixed
2 CA 6601A	1 Bolt	'L' Type	Collapsible
3 CA 6602A	2 Bolt	'L' Type	Fixed

Code	Fixing	Profile	Type
4 CA 6603A	Screw-In	'I' Type	Fixed w/Thread
5 CA 6604A	Spring Loaded	'L' Type	Fixed w/Thread

## ACCESSORIES / EXTRAS



Code	Description
1 CA 317	Cigar Plug / no Cable / no switch - Multi Flash Patterns
2 BLCA 319*	Cigarette Plug / no switch - Single Flash Patterns
3 EP 770	Illuminated Cigarette Plug & Socket (Fits: 28mm)

Code	Description
4 CA 313	Cigar Plug / 2.5mtr Cable / Pattern Switch Power Switch / Multiple Flash Patterns

WARNING LAMPS

# WARNING LAMPS | LIGHTBARS

## SIGMA REG 65 BEACON



### LED SIGMA 16" LIGHTBAR (REG 65)

10/30V • 56 Amber SMD LEDs  
ECE Reg 10/65 • Rated IP69K  
10 Patterns  
4 Bolt Fixings • 2.5mtr Cable  
388\*223\*66mm

16" Lightbar **CA 7097**

4 Pod Magnetic Kit **CA 7097MAG**

## SIGMA II 10" LED LIGHTBAR



### LED SIGMA II 10" LIGHTBAR (REG 65)

12/24V • 72 Amber SMD LEDs  
ECE Reg 65 • Rated IP69K • 10 Patterns  
2.5mtr Cable [CA 7636]  
3.0mtr Cable & Cig Plug [CA 7637]  
251\*170\*46.6mm  
20 Patterns

4 Bolt Fixed **CA 7636**

Magnetic **CA 7637**

## APOLLO LED LIGHTBAR RANGE

10/30V • High Performance Amber LEDs • ECE Reg 10/65 • Rated IP65 • 19 Flash Patterns  
PC Bracket Mount • 500mm Cable • Adjustable Mounting Brackets • Bolt Fixing



CA 7651 | 29" | 742\*270\*98.5mm

29" | 742\*270\*98.5mm | 72 LEDs **CA 7651**  
38" | 963\*270\*98.5mm | 90 LEDs **CA 7652**

7" | 1183\*270\*98.5mm | 108 LEDs **CA 7653**  
55" | 1403\*270\*98.5mm | 126 LEDs **CA 7654**

**NEW**



### 47" LED RECOVERY LIGHTBAR

10/30V • 126 High Performance LEDs  
ECE Reg 6 / 7 / 10 / 65 • Rated IP65  
19 Patterns • Clear Lens • 183\*270.6\*98.5mm  
Stop - Tail - Indicator lights built in

Amber **CA 7655**

WARNING LAMPS

# WARNING LAMPS | LIGHTBARS

## ECLIPSE



CA 7629 / Standing Legs Sold Separately

### LED ECLIPSE LIGHTBAR (REG 65)

12/24V • Amber LEDs  
ECE Reg 10/65 • Rated IP67  
LED Class II • 10 Patterns  
Night Enabled  
**Bolt Fixing**

27" | 694\*305\*121mm | 100 LEDs **CA 7630**

47" | 1149\*305\*121mm | 164 LEDs **CA 7628**

## ECLIPSE



### LED ECLIPSE LIGHTBAR (REG 65)

12/24V • Amber LEDs  
ECE Reg 10/65 • Rated IP67  
LED Class II • 10 Patterns  
Night Enabled  
**Bolt Fixing**

16" | 467\*305\*76mm | 68 LEDs **CA 7632B**

4 Pod Magnetic Kit **CA 7632MAG**

## LED MINI MASTER



### LED MINI MASTER LIGHTBAR

12/24V • 20 LEDs  
ECE Reg 10 • Rated IP65  
297\*175\*53mm • 10 Patterns  
**Amber Lens**

Bolt On **CA 7626C**  
Magnetic **CA 7627C**

### LED MINI MASTER LIGHTBAR (REG 65)

12/24V • 20 LEDs  
ECE Reg 10/65 • Rated IP65  
297\*175\*53mm • 10 Patterns  
**Clear Lens**

Bolt On **CA 7634**  
Magnetic **CA 7635**

### 6 LED LOW PROFILE WARNING LIGHT

10/30V • 6 LEDs • ECE Reg 10/65  
Rated IP67 • 120\*32\*14.4mm • 10 Patterns



Amber **CA 7084A**  
Red **CA 7084R**

### 4 LED LOW PROFILE WARNING LIGHT

10/30V • 4 Amber LEDs • ECE Reg 10  
Rated IP67 • 96.8\*28.3\*12.6mm • 19 Patterns



Amber **CA 7071A**

### 6 LED LOW PROFILE WARNING LIGHT

10/30V • 6 LEDs • ECE Reg 10 • Rated IP67  
112.6\*28.3\*12.6mm • 19 Patterns



Amber **CA 7073A**  
Red **CA 7073R**  
White **CA 7073W**

**NEW**

### 3 LED SUPER SLIM WARNING LIGHT

12/24V • 3 LEDs • ECE Reg Approved  
Rated IP67 • 83\*30\*9mm • 18 Patterns



Reg 10 / 65, Amber **CA 7182A**  
Reg 10, Red **CA 7182R**

**NEW**

### 4 LED SUPER SLIM WARNING LIGHT

12/24V • 4 LEDs • ECE Reg Approved  
Rated IP67 • 99\*30\*9mm • 18 Patterns



Reg 10 / 65, Amber **CA 7183A**  
Reg 10, Red **CA 7183R**

**NEW**

### 6 LED SUPER SLIM WARNING LIGHT

12/24V • 6 LEDs • ECE Reg Approved  
Rated IP67 • 131\*30\*9mm • 18 Patterns



Reg 10 / 65, Amber **CA 7184A**  
Reg 10, Red **CA 7184R**

WARNING LAMPS

# WARNING LAMPS | DIRECTIONAL

## 3 LED WARNING LIGHT

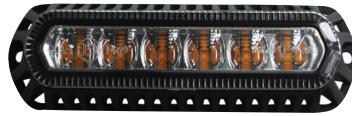


10/30V • 3 LEDs  
ECE Rated  
Rated IP67  
91\*45\*28mm  
6 Patterns

Amber / ECE REG 65 **CA 6082A**  
Red / ECE REG 10 **CA 6082R**  
White / ECE REG 10 **CA 6082W**

## 6 LED WARNING LIGHT

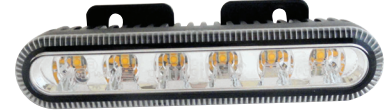
10/30V • 6 Amber LEDs • ECE Reg 10/65  
Rated IP67 • 140\*48\*30mm • 10 Patterns



Amber **CA 6084**

## 6 LED WARNING LIGHT

12/24V • 6 Amber LEDs • ECE Reg 10/65  
Rated IP67 • 142\*30\*35mm • 10 Patterns



Amber **CA 6083A**

## R65 3 LED WARNING LIGHT

10/30V • 3 LEDs • ECE Reg 65  
Rated IP6K9K • 91\*48\*28mm • 10 Patterns



Amber **CA 6082**

## 8 LED WARNING LIGHT

10/30V • 8 LEDs • ECE Reg 10/65  
Rated IP67 • 91\*42\*27mm • 9 Patterns



Amber **CA 7083A**

## 10 LED WARNING LIGHT

10/30V • 12 LEDs • ECE Reg 10 • Rated IP67  
142\*62\*27mm • 18 Patterns

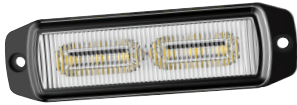


Amber **CA 6079A**  
Red **CA 6079R**  
White **CA 6079W**

**NEW**

## 6 LED LOW PROFILE WARNING LIGHT

12/24V • 6 Amber LEDs • Rated IP69K  
ECE Reg 10 / Reg 65 (Class 2)  
100\*28.5\*11.9mm  
19 Patterns



Amber **CA 7171A**

**NEW**

## 12 LED LOW PROFILE WARNING LIGHT

12/24V • 12 Amber LEDs • Rated IP69K  
ECE Reg 10 / Reg 65 (Class 2)  
108\*36\*11.9mm  
20 Patterns



Amber **CA 7173A**

**NEW**

## 6 LED LOW PROFILE WARNING LIGHT

12/24V • 6 Amber LEDs • Rated IP69K  
ECE Reg 10 / Reg 65 (Class 2)  
130\*30\*11mm  
19 Patterns



Amber **CA 7175A**

**NEW**

## 4 LED LOW PROFILE WARNING LIGHT

12/24V • 4 Amber LEDs • Rated IP67  
Reg 65 (Class 2) / CSPR 25 Class 3  
ECE Reg 10  
76\*54\*15mm  
10 Patterns



**CA 7124**

**NEW**

## 4 LED LOW PROFILE WARNING LIGHT

12/24V • 4 Amber LEDs • Rated IP67  
Reg 65 (Class 2) / CSPR 25 Class 3  
ECE Reg 10  
76\*62\*15mm  
10 Patterns



**CA 7123**

## 3 LED OVAL WARNING LIGHT



12/24V  
3 Amber SMD LEDs  
ECE Reg 10/65  
Rated IP67  
92\*65\*35mm  
6 Patterns

Amber **CA 5711**

## 10 LED WARNING LIGHT

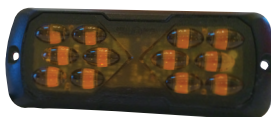
10/30V • 12 Amber SMD LEDs  
ECE Reg 10 • Rated IP67  
138\*58\*20mm  
10 Patterns



Amber **CA 7061A**

## 12 LED LOW PROFILE WARNING LIGHT

12/24V • 12 Amber SMD LED  
ECE Reg 10/65 • Rated IP67  
114\*44\*11mm  
10 Patterns



Amber **CA 7082A**

## DAYTIME RUNNING LAMP

10/30V • 8 White SMD LEDs • ECE Approved  
Rated IP67 • 140\*28\*34mm



White **CA 5713**

WARNING LAMPS

# WORKLAMPS

## 4" SQUARE WORK LAMP - 15W



12/28V • 1050 Lumens  
5 LEDs  
Rated IP67  
ECE Reg 10  
127\*136\*41mm

**CA 5702**

## 4" SQUARE WORK LAMP - 15W



12/28V • 1200 Lumens  
9 LEDs  
Rated IP67  
ECE Reg 10  
100\*100\*63mm

**CA 5770**

## 4" SQUARE WORK LAMP - 27W



9/32V • 1950 Lumens  
9 LEDs  
Rated IP67  
ECE Reg 10  
109\*109\*48mm

**CA 5740**

## 4" SQUARE WORK LAMP - 32W



10/30V • 1920 Lumens  
16 SMD LEDs • Rated IP66  
ECE Reg 10 • 110\*110\*28mm



**CA 5741**

## 4" SQUARE WORK LAMP - 48W



10/30V • 2016 Lumens  
16 SMD LEDs • Rated IP6K9K  
ECE Reg 10 • 110\*110\*28mm



**CA 5745**

## 4" SQUARE WORK LAMP - 27W



12/28V • 2050 Lumens  
9 LEDs • Rated IP67  
ECE Reg 10 • 116\*106\*70mm

**CA 5709**

## 4" SQUARE WORK LAMP - 48W



12/28V • 3200 Lumens  
16 LEDs  
Rated IP67  
ECE Reg 10  
118\*118\*74mm

**CA 5714**

## 4" SQUARE WORK LAMP - 48W



10/30V • 4150 Lumens  
16 LEDs  
Rated IP67  
ECE Reg 10  
110\*110\*69.7mm



Plug-in Connector **CA 5752**

## 4.4" LED WORK LAMP - 54W



10/32V • 6840 Lumens  
36 OSRAM LEDs  
Rated IP67 / Thermo Sense  
EMC [CISPR 25 CLASS 2]  
ECE R10 • 110\*48.5\*125mm



Plug-in Connector **CA 5739**

## EXPLORER WORK LAMP - 35W



9/32V • 3500 Lumens • 7 CREE LEDs  
Rated IP68 • ECE Reg 10  
EMC [CISPR 25 CLASS 4]  
109\*75\*118mm



Plug-in Connector **CA 6161**

## 3" ROUND WORK LAMP - 18W



12/28V • 1350 Lumens  
6 LEDs  
Rated IP67  
ECE Reg 10  
84\*97\*113mm

**CA 5703**

**DISPLAY BOXES AVAILABLE**

for **CA 5741** & **CA 5743**

from the popular  
**TREKKER** Series.

## 4" ROUND WORK LAMP - 18W



12/28V • 1350 Lumens  
6 LEDs  
Rated IP67  
ECE Reg 10  
116\*43\*136mm

**CA 5706**

## 4" MAGNETIC WORK LAMP - 18W



12/28V • 1350 Lumens  
6 LEDs • Rated IP67  
ECE Reg 10  
116\*147\*43mm • 9mtr Cable  
With cigarette plug

**CA 5707**

## EXPLORER WORK LAMP - 90W



9/32V • 9000 Lm • 6 CREE LEDs  
Rated IP68 • ECE Reg 10  
EMC [CISPR 25 CLASS 4]  
106\*79\*131mm



Plug-in Connector **CA 6171**

## 4.6" LED WORK LAMP - 54W



10/32V • 6840 Lm • 36 OSRAM LEDs  
Rated IP67 / Thermo Sense  
EMC [CISPR 25 CLASS 2]  
ECE R10 • 116\*48.5\*128mm



Plug-in Connector **CA 5738**

## 3.5" LED MINI WORK LAMP - 16W



10/30V • 1600 Lm • 16 CREE LEDs  
Rated IP67 / IP69K  
EMC [CISPR 25 CLASS 3]  
ECE R10 / R23  
82.8\*41.8\*110.3mm

Plug-in Connector **CA 5728**

## 6" RECTANGULAR WORK LAMP - 18W



12/28V • 1350 Lumens  
6 LEDs • Rated IP67  
ECE Reg 10  
150\*100\*59mm

**CA 5705**

WORKLAMPS



## 6" ADJUSTABLE WORK LAMP - 24W



12/28V • 1600/1800 Lms  
8 LEDs • Rated IP67  
ECE Reg 10  
156\*93\*85mm  
Side & Bottom Mount

**CA 5716**

## 6" ADJUSTABLE WORK LAMP - 40W



12/28V • 3400 Lms • 8 LEDs  
Rated IP67 • ECE Reg 10  
156\*93\*95mm  
Side & Bottom Mount



Plug-in Connector **CA 5746**

## 6" ADJUSTABLE OVAL WORK LAMP - 30W



10/32V • 6840 Lm • 36 OSRAM LEDs  
Rated IP67 / Thermo Sense  
EMC (CISPR 25 CLASS 2)  
ECE R10 • 110\*48.5\*125mm



Plug-in Connector **CA 5736**

## 6" OVAL WORK LAMP - 18W



12/28V • 1350 Lumens  
6 LEDs • Rated IP67  
ECE Reg 10  
145\*90\*50mm

**CA 5704**

## 6" OVAL WORK LAMP - 24W



10/30V • 1440 Lumens  
8 LEDs • Rated IP6K9K  
Reg 10 • 142\*60\*90mm



**CA 5743**

## 6" OVAL WORK LAMP - 39W



10/30V • 3100 Lumens  
Rated IP67 • ECE Reg 10  
145\*77\*120mm



Plug-in Connector **CA 5751**

## 2.5" MINI ROUND WORK LAMP - 9W



10/30V • 750 Lumens  
3 LEDs • Rated IP67  
ECE Reg 10  
70\*95\*45mm

**CA 5734**

## 2.5" MINI TRI WORK LAMP - 9W



10/30V • 750 Lumens  
3 LEDs • Rated IP67  
ECE Reg 10  
72\*98\*48mm

**CA 5730**

## 3.5" MINI OVAL WORK LAMP - 9W



10/30V • 750 Lumens  
3 LEDs • Rated IP67  
ECE Reg 10  
84\*74\*57mm

**CA 5732**

## SQUARE MINI WORK LAMP - 7.5W



12/24V • 950 Lumens  
5 LEDs • Rated IP69K  
ECE Reg 10  
73\*31\*94mm

**CA 5733**

## ROUND MINI WORK LAMP - 7.5W



12/24V • 950 Lumens  
5 LEDs • Rated IP69K  
ECE Reg 10  
75\*30\*94mm

**CA 5735**

## 6" EASY SWITCH LAMP - 12W



12/28V • 1350 Lumens  
12 LEDs • Rated IP67  
ECE Reg 10 • On / Off Switch  
156\*242\*86mm

**CA 5712**

## 4" SQUARE REVERSE LAMP - 16W



10/30V • 500 Lumens  
16 LEDs  
Rated IP66  
ECE Reg 10 / Reg 23  
110\*110\*28mm

**CA 5731**

## 6" LED WORK LAMP - 30W



10/32V • 2520 Lm  
6 OSRAM LEDs  
Rated IP67 • ECE R10 / 23 / 148  
EMC (CISPR 25 CLASS 2)  
160\*64\*54mm



Plug-in Connector **CA 5737**

## 5" RECTANGULAR WORK LAMP - 18W



12/28V • 1350 Lumens  
6 LEDs  
Rated IP67  
ECE Reg 10  
145\*46\*75mm

**CA 5708**

## 9" LED SCENE LAMP - 18W

12/24V • 18 LEDs  
Rated IP67 • ECE Reg 10  
230.7\*53.7\*46.4mm



**CA 5748**

OUR ECONOMY RANGE OF LAMPS

---

OUR PREMIUM RANGE OF LAMPS

WORKLAMPS

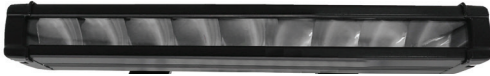
# WORKLAMPS BARS



## 11" LED WORKLAMP BAR - 45W

12/28V • 3780 Lumens • 9 OSRAM LEDs  
 Rated IP67 • ECE Reg 10  
 EMC [CISPR 25 CLASS 2]  
 276\*68\*32.5mm

**NEW**



Plug-in Connector **CA 6131**



## 21" LED LIGHTBAR - 90W

12/28V • 7650 Lumens • 18 OSRAM LEDs  
 Rated IP67 • ECE Reg 10 / 112  
 EMC [CISPR 25 CLASS 2]  
 535\*70\*32.5mm

**NEW**



Plug-in Connector **CA 6136**



## 22" LED LIGHTBAR - 180W

12/28V • 15120 Lumens • 36 OSRAM LEDs  
 Rated IP67 • ECE Reg 10 / 112  
 EMC [CISPR 25 CLASS 2]  
 550\*77\*56mm  
**Double Row LED**

**NEW**



Plug-in Connector **CA 6147**



## 21" ADVENTURE WORK LAMP BAR

12/28V • 4050 Lumens • 18 LEDs  
 Rated IP67  
 EMC Approved  
 536\*86\*55mm



**CA 6123**

## 8" ADVENTURE WORK LAMP BAR

12/28V • 2700 Lms • 12 LEDs  
 Rated IP67  
 EMC Approved  
 200\*90\*66mm



**CA 6114**



## WORK LAMP BARS - DOUBLE ROW

12/28V • Rated IP67 • EMC Approved



24 LEDs / 446\*96\*80 / 5400 LMS **CA 6115**  
 48 LEDs / 824\*96\*80 / 10800 LMS **CA 6117**  
 60 LEDs / 1013\*96\*80 / 13500 LMS **CA 6119**



## CURVED WORK LAMP BARS - DOUBLE ROW

12/28V • Rated IP67 • EMC Approved



24 LEDs / 528\*119\*85 / 5400 LMS **CA 6126**  
 36 LEDs / 719\*119\*93 / 8100 LMS **CA 6127**  
 48 LEDs / 910\*119\*103 / 10800 LMS **CA 6128**

WORKLAMPS

# DRIVING & HEAD LAMPS

**NEW**

## LED-X DRIVING / POSITION LAMP

12/24V • 20 LEDs • 33.6W\*  
Rated IP69K  
ECE Reg 7 / 10 / 12  
240\*102\*160mm



**LED-X**

\*FULL BEAM: 30W + POSITION: 3.6W **CA 6162**

**NEW**

## DRIVING / POSITION LAMP

12/24V • 2800 Lumens • 51.5W\* • 19 LEDs  
Rated IP66, IP6K9K  
ECE R149 [Driving Lamp]  
ECE R148 [Position Lamp]  
ECE Approved Reg 7 / 10 / 112  
EMC CISPR25 CLASS 5  
244\*110\*160mm



\*DRV: (12x4W) 48W, POS: (7x0.5W) 3.5W / TOTAL 51.5W [RAW] **CA 6169**

## 7" DRIVING / DRL LAMP

9600 Lumens • 12/24V • 130W\*  
24 LEDs (10 Front DI + 10 POS)  
Rated IP67 / IPX9K  
ECE Reg 10 / 148 • CISP R25 Class 3  
740m Light Distance  
189\*98\*199mm  
**Indicator & Front Position**



\*FULL BEAM: 92W + POSITION: 0.7W **CA 6172**

**NEW**

## 9" DRIVING / DRL LAMP

12800 Lumens • 12/24V • 162W\*  
30 LEDs (12 Front DI + 12 POS)  
Rated IP67, IPX9K  
ECE Reg 10 / 148 • CISP R25 Class 3  
980m Light Distance  
233\*109\*243mm  
**Indicator & Front Position**



\*FULL BEAM: 110W + POSITION: 0.8W **CA 6173**

## COMBO LED HEADLIGHT (RH)

12/24V • 16 LEDs • 82W\*  
Plug in Connector  
20cm Fly Lead  
Rated IP68  
ECE Reg 6 / 10 / 87 / 112  
228\*106\*173mm  
**RHD Vehicles Only**



\*HIGH BEAM: 44W, LOW BEAM: 22W, DRL: 7W **CA 6165R**

\*HIGH BEAM: 44W, LOW BEAM: 22W, DRL: 7W **CA 6165L**

**NEW**

## COMBO LED HEADLIGHT (LH)

12/24V • 16 LEDs • 82W\*  
Plug in Connector  
20cm Fly Lead  
Rated IP68  
ECE Reg 6 / 10 / 87 / 112  
228\*106\*173mm  
**LHD Vehicles Only**



\*HIGH BEAM: 44W, LOW BEAM: 22W, DRL: 7W **CA 6168R**

\*HIGH BEAM: 44W, LOW BEAM: 22W, DRL: 7W **CA 6168L**



OUR FULL  
ELECTRICAL RANGE  
CAN BE FOUND  
@  
**WWW.247LIGHTING.NET**

WORKLAMPS

# TAIL LAMPS / MULTI-FUNCTIONAL

## MULTIFUNCTIONAL TAIL LAMP



10/30V  
ECE Approved  
Rated IP67  
120\*39\*19mm  
S • T • I

**CA 7092**

## MULTIFUNCTIONAL FOG / REVERSE LAMP



10/30V  
ECE Approved  
Rated IP67  
120\*39\*19mm  
R • F

**CA 7096**

## MULTIFUNCTIONAL TAIL LAMP



10/30V  
ECE Approved  
Rated IP67  
192\*50\*28mm  
S • T • I • R • RR

**CA 7070**

## 4" MULTIFUNCTIONAL TAIL LAMP



12/24V  
ECE Approved  
Rated IP67  
105\*95\*24mm  
S • T • I • NP • RR

**CA 7093**

## 4" FRONT POSITION / INDICATOR



12/24V  
ECE Approved  
Rated IP67  
105\*95\*24mm  
FP • I • RR

**CA 7094**

## 4" FOG / REVERSE



12/24V  
ECE Approved  
Rated IP67  
105\*95\*24mm  
F • R • RR

**CA 7095**

## 4" MULTIFUNCTION TAIL LAMP



10/30V  
ECE R6/7/10  
Rated IP67  
82\*82\*28mm  
100\*100\*28mm  
(w/Bracket)

S • T • I **CA 7106**

## 4" INDICATOR & TAIL LAMP



10/30V  
ECE R6/7/10  
Rated IP67  
82\*82\*28mm  
100\*100\*28mm  
(w/Bracket)

T • I **CA 7107**

## 4" REVERSE & TAIL LAMP



10/30V  
ECE R7/10/23  
Rated IP67  
82\*82\*28mm  
100\*100\*28mm  
(w/Bracket)

T • R **CA 7108**

## 4" STOP & TAIL LAMP



10/30V  
ECE R7/10  
Rated IP67  
82\*82\*28mm  
100\*100\*28mm  
(w/Bracket)

S • T **CA 7109**

## 4" FRONT POSITION / INDICATOR

**NEW**



12/24V • 36 LEDs  
ECE Reg 10 / 148 / 150  
EMC Reg 10 • Rated IP67  
105\*95\*25mm  
FP • DI • RR  
Dynamic Indicator

Left **CA 7111L**  
Right **CA 7111R**

## 4" MULTIFUNCTIONAL TAIL LAMP

**NEW**

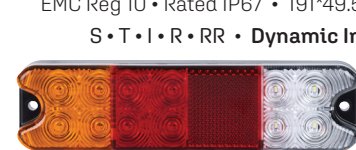


12/24V • 40 LEDs  
ECE Reg 10 / 148 / 150  
EMC Reg 10 • Rated IP67  
105\*95\*25mm  
S • T • I • NP • RR  
Dynamic Indicator

Left **CA 7110L**  
Right **CA 7110R**

## MULTIFUNCTIONAL TAIL LAMP

**NEW**



12/24V • 12 SMD LEDs  
ECE Reg 10 / 148 / 149  
EMC Reg 10 • Rated IP67 • 191\*49.5\*30mm  
S • T • I • R • RR • Dynamic Indicator

**CA 7074**

## FOG / REVERSE LAMP



12/24V  
ECE Approved  
Rated IP67  
101\*81\*29

Fog **CA 7103**  
Reverse **CA 7102**

## 4.5" MULTIFUNCTIONAL TAIL LAMP



12V  
ECE Approved  
Rated IP65  
112\*112\*25mm  
S • T • I • RR

**CA 7058**

## 6" MULTIFUNCTIONAL TAIL LAMP



12V  
ECE Approved  
Rated IP66  
155\*85\*25  
S • T • I • RR  
TWIN PACK

**CA 7060**

REAR & MARKER LAMPS

F: Fog Light

FP: Front Position

I: Indicator Light

NP: NumberPlate

R: Reverse Light

RR: Reflex Reflect

S: Stop Light

SM: Side Marker

T: Tail Light

# TAIL LAMPS / MULTI-FUNCTIONAL

## 8" MULTIFUNCTIONAL TAIL LAMP



12/24V  
ECE Approved  
Rated IP67  
190\*100\*37mm  
S • T • I • RR

**CA 7069**  
with 5m Cable **CA 70691**

## 12" MULTIFUNCTIONAL TAIL LAMP



12/24V • ECE Approved  
Rated IP67 • 284\*100\*37mm  
S • T • I • R • RR • F

Clear Lens **CA 7098**

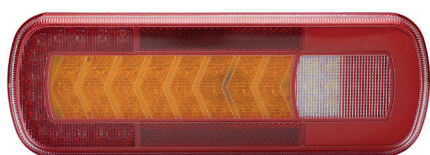
## 12" MULTIFUNCTIONAL TAIL LAMP



12/24V • ECE Approved  
Rated IP67 • 284\*100\*37mm  
S • T • I • R • RR

**CA 7099**

## 12" MULTIFUNCTIONAL TAIL LAMP (DYNAMIC INDICATOR)



12/24V • ECE Approved  
Rated IP67  
283\*100\*29mm  
S • T • I • R • RR • F

**CA 7048**  
ISO 13027 Compliant **CA 7049**

## 12" MULTIFUNCTIONAL TAIL LAMP



12/30V  
ECE Approved  
Rated IP67  
296\*142\*45mm  
S • T • I • R • RR • F

Left **CA 7035**  
Right **CA 7036**

## 10" MULTIFUNCTIONAL TAIL LAMPS



12/24V  
ECE Approved  
Rated IP67  
252\*133\*28.5mm  
S • T • I • R • RR • F

Left **CA 7046**  
Right **CA 7047**

## MULTIFUNCTIONAL TAIL LAMPS



12/24V  
ECE Approved  
Rated IP67  
208\*187.4mm  
S • T • I • F • RR

Right **CA 7105R**  
Left **CA 7105L**

## 5" MULTIFUNCTIONAL TAIL LAMP



12/24V • 40 SMD LEDs • 7.8W  
ECE Reg 3 / 6 / 7 / 10  
Rated IP67  
Ø140mm\*38mm  
S • T • I • R • RR  
Dynamic Indicator

Left **CA 9003**  
Right **CA 9004**

## 5.5" MULTIFUNCTIONAL TAIL LAMP



10/30V  
ECE Approved  
Rated IP67  
20 LEDs  
Ø140mm\*83mm  
S • T • I

**CA 9008**

## 5.5" MULTIFUNCTIONAL TAIL LAMP



12/24V  
ECE R6 / R7  
Rated IP67  
20 SMD LEDs  
S • T • I

With Bowl / Ø140\*83mm **CA 9007**  
No Bowl / Ø140\*38mm **CA 9009**

## 5" MULTIFUNCTIONAL TAIL LAMP



10/30V  
ECE Approved  
Rated IP67  
24 LEDs  
Ø122mm\*43mm  
S • T • I

**CA 7008**

F: Fog Light

FP: Front Position

I: Indicator Light

NP: NumberPlate

R: Reverse Light

RR: Reflex Reflect

S: Stop Light

SM: Side Marker

T: Tail Light

REAR & MARKER LAMPS

# TAIL LAMPS / MULTI-FUNCTIONAL



## 5" MULTIFUNCTIONAL FOG / REVERSE

12/24V  
ECE Approved  
Rated IP67  
24 LEDs  
Ø122mm\*43mm  
F • R

**CA 7009**



## 5" MULTIFUNCTIONAL FRONT POSITION/ INDICATOR

12/24V  
ECE Approved  
Rated IP67  
24 LEDs  
Ø122mm\*43mm  
FP • I

**CA 7010**



## ROUND LED LIGHT FOG / REVERSE

12/24V  
ECE Approved • Rated IP67  
14 LEDs • Ø140mm\*35mm

Fog **CA 9013**  
Reverse **CA 9014**



## LED NUMBER PLATE LAMP

10/30V • 4 LEDs  
ECE Approved • Rated IP67  
72\*50\*41mm

**CA 7085**



## LED COMMERCIAL TAIL LAMPS

12/24V  
ECE Approved • Rated IP67  
445\*144\*76mm  
AMBER SIDE MARKER

S • T • I • R • RR **CA 7040**  
S • T • I • F • RR **CA 7041**



## LED COMMERCIAL TAIL LAMPS

12/24V  
ECE Approved • Rated IP67  
445.5\*144\*76mm  
AMBER SIDE MARKER

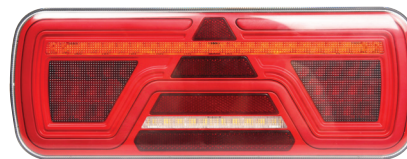
Left / S • T • I • RR • SM **CA 7042**  
Right / S • T • I • RR • SM **CA 7044**



## LED COMMERCIAL TAIL LAMP

12/24V • 128 LEDs  
ECE Approved • Rated IP67  
D: 523\*135\*76mm  
S • T • I • R • F • RR • SM  
Dynamic Indicator  
With side stalk lamp

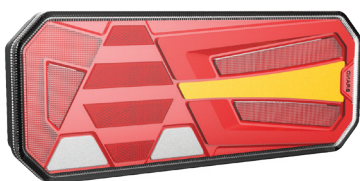
Left **CA 7020**  
Right **CA 7021**



## LED COMMERCIAL TAIL LAMP

12/24V • 118 LEDs  
ECE Approved • Rated IP67  
D: 360\*135\*36mm  
S • T • I • R • F • RR  
Dynamic Indicator

Left **CA 7026**  
Right **CA 7027**



## LED COMMERCIAL TAIL LAMP

12/24V • 84 SMD LEDs  
ECE Reg 3 / 6 / 4 / 7 / 38 / 91  
EMC Reg 10 • Rated IP67  
350\*131\*60mm  
S • T • I • R • F • NP • RR • SM  
Dynamic Indicator

Left **CA 7022**  
Right **CA 7023**



## LED COMMERCIAL TAIL LAMP

12/24V • 76 LEDs  
ECE Reg 3 / 6 / 7 / 23 / 38  
EMC Reg 10 • Rated IP67  
350\*131\*36.5mm  
S • T • I • R • F • RR  
Dynamic Indicator

Left **CA 7028**  
Right **CA 7029**

REAR & MARKER LAMPS

F: Fog Light    FP: Front Position    I: Indicator Light    NP: NumberPlate    R: Reverse Light    RR: Reflex Reflect    S: Stop Light    SM: Side Marker    T: Tail Light

# MARKER LAMPS / SIDE MARKERS

## LED MARKER LAMPS



10/30V • 3 LEDs  
Pendant Bracket Mount  
Rated IP67  
ECE Approved  
110\*70(40)\*13mm

Amber **CA 6090A**  
Red **CA 6090R**  
White **CA 6090W**

## LED MARKER LAMPS



12/24V • 5 LEDs  
Bracket Mount  
Rated IP67  
ECE Approved  
110\*82\*38mm

Amber **CA 7090A**  
Red **CA 7090R**  
White **CA 7090W**

## LED MARKER LAMPS



12/24V • 3 LEDs  
Surface/Bracket Mount  
Plug-In Connector  
Rated IP67 • ECE Approved  
102\*74.3\*36.2mm

Amber **CA 9350A**  
Red **CA 9350R**  
White **CA 9350W**

## LED MARKER LAMPS



10/30V  
Surface/Bracket Mount  
ECE Approved  
Rated IP67  
111\*75(46)\*24mm

Amber **CA 7125A**  
Red **CA 7125R**  
White **CA 7125W**

## LED MARKER LAMPS



12/24V  
ECE Approved  
Rated IP67  
103\*45\*38mm

Amber **CA 9330A**  
Red **CA 9330R**  
White **CA 9330W**

## LED MARKER LAMPS



12/24V  
ECE Approved  
Rated IP67  
109\*41\*38mm

Amber **CA 9320A**  
Red **CA 9320R**  
White **CA 9320W**

## LED MARKER LAMPS



12/24V  
ECE Approved  
Rated IP67  
130\*32mm

Amber **CA 9310A**  
Red **CA 9310R**  
White **CA 9310W**

## LED MARKER LAMPS



12/24V  
ECE Approved  
Rated IP66  
96\*20mm

Amber **CA 9315A**  
Red **CA 9315R**  
White **CA 9315W**

REAR & MARKER LAMPS

# MARKER LAMPS / STALK LAMPS

## LED MARKER LAMPS



10/30V • 2 LEDs  
Surface Mount  
Rated IP66  
ECE Approved  
65\*28\*17mm

Amber **CA 6095A**  
Red **CA 6095R**  
White **CA 6095W**

## LED MARKER LAMPS



10/30V  
ECE Approved  
Rated IP67  
Ø28\*16

Amber **CA 6091A**  
Red **CA 6091R**  
White **CA 6091W**

## LED MARKER LAMPS



12/24V • Rated IP67  
ECE Reg 10 / 148 / 150  
88.2\*149.4\*26.6mm

Indicator Function included

Amber **CA 7121**

## LED MARKER LAMP



10/30V  
6 SMD LEDs (0.2W each)  
Horizontal Mount  
Rated IP67  
ECE Reg 3 / 7 / 91  
EMC Reg 10  
124\*49\*22mm

**CA 7112A**

## LED MARKER LAMP



12/24V • 2 LEDs  
Surface Mount • Rated IP67  
ECE Approved  
106\*35\*13mm

**CA 7120A**

## LED MARKER LAMP



12/24V • 2 LEDs  
Surface Mount • Rated IP67  
ECE Approved  
126\*37.7\*10mm

**CA 7091A**

**NEW**

## LED MARKER LAMP



10/30V • 6 LEDs (2 x 0.2W / 4 x 0.5W)  
Screw Mount • Rated IP67  
ECE Approved R10 / R6 / R7 / R91  
100\*85\*36mm  
Front: White • Rear: Red • Side: Amber

**CA 9723**

## LED RUBBER STALK LAMP



12/24V • 8 LEDs • Surface Mount  
Rated IP67 • ECE Approved  
87\*67mm  
Front: White  
Rear: Red

Right **CA 9711**

## 45° LED STALK LAMPS



10/30V • 5 LEDs • 45° Angle  
Rated IP67 • ECE Approved  
Front: White • Rear: Red • Side: Amber  
149\*144\*104mm

Left / Vertical **CA 6193V**  
Right / Vertical **CA 6194V**

**NEW**

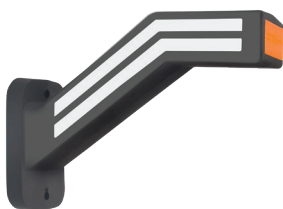
## 60° LED STALK LAMPS



10/30V  
6 SMD LEDs (2 x 0.2W/4 x 0.5W)  
60° Model Arm Angle • 500mm Cable Length  
Rated IP67 • ECE Approved R10 / R6 / R7 / R91  
Front: White • Rear: Red • Side: Amber  
176\*110\*36mm

Left / Horizontal **CA 6200V**  
Right / Horizontal **CA 6201V**

## LED STALK LAMPS



10/30V • 39 SMD LEDs • 33.9W  
Vertical Mount • Rated IP67  
ECE Reg 6 / 7 / 10 / 91 • 185\*146\*52mm  
Amber / Red / White Lens  
Dynamic Indicator

Left **CA 6191V**  
Right **CA 6192V**

## 60° LED STALK LAMPS



12/24V • 6 LEDs • 60° Angle  
Rated IP66 • ECE Approved  
175\*55mm • Lens: Ø60mm  
Front: White • Rear: Red

Left **CA 6296**  
Right **CA 6297**

REAR & MARKER LAMPS



# STALK LAMPS / TRAILER LAMPS

## 60° LED STALK LAMPS



10/30V • 8 LEDs • 60° Angle  
Rated IP67 • ECE Approved  
130\*55mm • Lens: Ø60mm  
Front: White • Rear: Red

Left **CA 6096**  
Right **CA 6097**

## 90° LED STALK LAMPS



10/30V • 8 LEDs • 90° Angle  
Rated IP67 • ECE Approved  
160\*55mm • Lens: Ø60mm  
Front: White • Rear: Red

Left **CA 6196**  
Right **CA 6197**

## 90° SHORT LED STALK LAMPS

**NEW**



12/24V • 6 LEDs • 90° Angle  
Rated IP66 • ECE Approved  
115\*55mm • Lens: Ø60mm  
Front: White • Rear: Red

Left **CA 6298**  
Right **CA 6299**

## LED SIDE MARKER LAMP



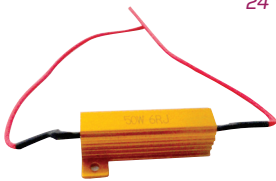
10/30V • 15 SMD LEDs (0.2W each)  
Horizontal / Vertical Mount  
Rated IP67 • ECE Reg 7 / 10 / 91  
132\*102\*54mm

Left **CA 9721**  
Right **CA 9722**

## RESISTOR

50 Watt • 6 Ohms • 628\*50\*15mm

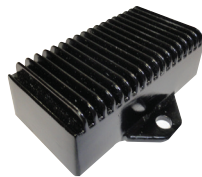
12 Volt **CA 6061**  
24 Volt **CA 6062**



## RESISTOR

Aluminium Alloy • Low Power • 87\*45\*30mm

12 Volt / 15.96W **CA 7055**  
24 Volt / 16.08W **CA 7056**



## RESISTOR

12/24V  
50 Watt  
6 Ohms  
55\*40\*18mm



**NEW**

12/24 Volt **CA 7161**

## LED TRAILER BOARDS

12V • ECE Reg 3 / 4 / 6 / 7 / 38 • Rated IP67  
Reflector / Stop / Tail / Ind. / Fog / No. Plate  
7 PIN Connection



4' / 7m Cable / LED **CA 9504**  
4' / 12m Cable / LED **CA 9505**  
5' / 12m Cable / LED **CA 9507**

## TRAILER BOARDS

12V • ECE Reg 3 / 4 / 6 / 7 / 38 • Rated IP67  
Reflector / Stop / Tail / Ind. / Fog / No. Plate  
7 PIN Connection



4' / 7m / BULB **CA 9500**  
4' / 10m / BULB **CA 9502**

## LED MAGNETIC TRAILER LAMPS

12V • ECE Reg 3 / 4 / 6 / 7 • Rated IP67  
2.5mtr Between Lamps • 7 Pin Connection  
Reflector / Stop / Tail / Indicator / Number Plate



7.5m Cable / LED **CA 9553**  
12m Cable / LED **CA 9554**

## MAGNETIC TRAILER LAMPS

12V • ECE Reg 4 / 6 / 7 • Rated IP67  
2.5mtr Between Lamps • 7 Pin Connection  
Stop / Tail / Indicator / Number Plate



7.5m / BULB **CA 9550**

REAR & MARKER LAMPS

# INTERIOR LAMPS

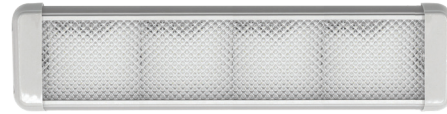
## 10.5" / 22.5" INTERIOR LAMP\*



12/28V  
H: 28 / D:13.5  
On/Off Switch  
\*PACKS of 2

266mm | 380 Lms | 18 LEDs **CA 7079**  
570mm | 900 Lms | 45 LEDs **CA 7080**

## 18.25" / 10.5" INTERIOR LAMP



12/28V  
H: 100 / D:28  
On/Off Switch

460mm | 1920 Lms | 96 LEDs **CA 7077**  
262mm | 960 Lms | 48 LEDs **CA 7078**

## 14.5" SWIVEL LAMP



12/28V • 30 LEDs  
660 Lms  
470\*35\*33mm  
On/Off Switch  
400mm Cable  
180° Turnable

**CA 6077**

## 13" SWIVEL LAMP



12/28V • 6 LEDs  
660 Lms  
327\*46\*51mm  
On/Off Switch  
400mm Cable  
180° Turnable

**CA 6075**

## 9" SWIVEL LAMP



12/28V • 10 LEDs  
200 Lms  
225\*35\*33mm  
On/Off Switch  
400mm Cable  
180° Turnable

**CA 6078**

## 6" ROUND LAMP



12/28V • w/Switch  
6 LEDs • 660 Lms  
Ø143\*38mm  
400mm Cable

**CA 6150**

## 4" ROUND LAMP



12/28V • w/Switch  
3 LEDs • 330 Lms  
Ø95\*24mm  
400mm Cable

**CA 6151**

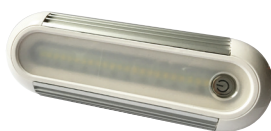
## 5" ROUND LAMP



12/24V • ECE Reg 10  
35 LEDs • 2100 Lms  
Ø130\*17mm  
Illuminated Touch Switch  
Rated IP67

**CA 6152**

## 7" OVAL LAMP



12/24V • ECE Reg 10  
20 LEDs • 1400 Lms  
172\*57\*15mm  
Illuminated Touch Switch  
Rated IP67

Illuminated Touch Switch **CA 6153**

## 6.75" OVAL LAMP



12/24V • ECE Reg 10  
20 LEDs • 800 Lms  
170\*82\*18mm  
W/Switch  
Rated IP67  
Operation Temp: +65°C to -40°C

Illuminated Touch Switch **CA 7072**

INTERIOR / INSPECTION LAMPS

# INTERIOR LAMPS / INSPECTION LAMPS

**NEW**

## LED ROUND INTERIOR LAMP



12/24V • 3W (26 x 0.2W)  
26 LEDs • 350 Lms  
Ø110\*14mm  
200mm Cable  
ECE REG 10 • IP67

**CA 6154**  
with PIR Sensor **CA 6155**

**NEW**

## LED OVAL INTERIOR LAMP



12/24V • 3W (24 x 0.2W)  
24 LEDs • 350 Lms  
172\*57\*16mm  
200mm Cable  
ECE Reg 10 • IP67

**CA 6156**  
with PIR Sensor **CA 6157**

**NEW**

## 15" LED INTERIOR LAMP



12/24V • 3W (15 x 0.2W)  
15 LEDs • 260 Lms  
380\*36\*21mm (PIR) / 380\*36\*17mm (SW)  
200mm Cable  
ECE Reg 10 • IP67

with PIR Sensor **CA 6158**  
Illuminated Touch Switch **CA 6159**

**NEW**

## 27" LED INTERIOR LAMP



12/24V • 6W (30 x 0.2W)  
30 LEDs • 520 Lms  
680\*36\*21mm (PIR) / 680\*36\*17m (SW)  
200mm Cable  
ECE Reg 10 • IP67

with PIR Sensor **CA 6166**  
Illuminated Touch Switch **CA 6167**



## LED INSPECTION LAMP & TORCH

**580 Lumens** • 2 in 1 LED Lamp  
Rechargeable • 270° Dual Pivot Head  
4 Brightness settings • USB / Car Charger  
Li-ion Battery • Magnetic Stand / Metal Hook  
Ultra Slim, Compact design  
Folds into Pocket size Lamp  
Dimensions: 325\*40\*30mm  
**Display Box of 8 Available**

POLARIS

**EP 066**



## LED INSPECTION LAMP & TORCH

**380 Lumens**  
Rechargeable  
7 SMD LEDs • USB / Car Charger  
2 Magnets • 2 Foldable Hooks  
Li-ion Battery  
Dimensions: 270\*60\*39mm  
**Display Box of 8 Available**

POLARIS

**EP 069**



## RECHARGEABLE COB LED HEAD TORCH

**350 Lumens** • 5W COB LED • Li-ion Battery • 120° Illumination • Switch Mode Function: 10% - 100%  
Head Band/Belt Bracket • USB Cable • Motion Activated & Dim Function • IP Rated IP65 / IK Rated: IK08  
Protection Class: Class III • CE Rated / RoHS • Dimensions: 87\*49\*41mm • **Display Box of 10 Available**

POLARIS

**EP 1090**



## LED INSPECTION LAMP

**650 (500+150) Lumens**  
2 in 1 LED Lamp • Rechargeable  
USB / Car Charger • Dimmer Function  
Strong Magnetic Stand • Li-ion Battery  
Slim Compact / Soft Neck / with Clip  
Dimensions: 540\*46\*51mm  
**Display Box of 8 Available**

POLARIS

**EP 065**



## LED INSPECTION LAMP

**650 (800+150) Lumens**  
2 in 1 LED Lamp • Rechargeable  
USB / Car Charger  
Strong Magnetic Stand & Hook • Li-ion Battery  
Dimming Function / 360° Pivot base  
Dimensions: 410\*46.5\*52mm  
**Display Box of 6 Available**

POLARIS

**EP 067**

INTERIOR / INSPECTION LAMPS

# REVERSING CAMERAS & MONITORS

## 4.3" REVERSING CAMERA KIT



12/24V  
No Audio  
Camera IP69  
ECE Reg 10  
Sun Visor  
9 Pin Cable Connection  
10mtr Cable Included

**CA 9742**

## 7" REVERSING CAMERA KIT



12/32V • With Audio  
Night Vision  
Camera IP69  
ECE Reg 10  
Sun Visor Included  
9 Pin Cable Connection  
20mtr Cable Included

**CA 9770**

## 7" WIRELESS REVERSING KIT



9/32V  
No Audio  
Night Vision  
Camera IP67  
ECE Reg 10  
Sun Visor Included

**CA 9780**

## 7" QUAD SCREEN WIRELESS KIT



12/32V  
With Audio • Night Vision  
Camera IP67 • ECE Reg 10  
Sun Visor  
Takes up to 4 cameras  
DVR Enabled

**CA 9790**

## 7" REAR VIEW MIRROR KIT



12/32V  
No Audio  
Night Vision  
Camera IP69  
ECE Reg 10  
20mtr Cable Included

**CA 9772**

## 5" WIRELESS REVERSING KIT



12/24V  
No Audio • Night Vision: 8m  
Camera IP69 • ECE Reg 10  
DC Connector / Sun Visor  
1 Camera Input  
Wireless Signal: 50m

**CA 9745**

## 7" (178mm) DIGITAL TFT PANEL MONITOR

DC 12-32 Volts • 7" (178mm) Digital TFT Panel Monitor  
NTSC/PAL [Auto Switch] • 800 RGB[H]\*480[V] DOT  
2AV Video Input  
Brightness: 300cd/m<sup>2</sup> • Contrast: 350:1  
With Audio Function • CE Approved  
9 Pin Connect • 1500mm cable  
Dimensions: 177mm\*122mm\*26mm



Compatible with CA 9770 **CA 9773**

## 7" (178mm) WIRELESS SAFETY MONITOR

DC 12-32 Volts • 7" (178mm) HD 4 Split DVR Monitor  
NTSC/PAL [Auto Switch] • 800 RGB[H]\*480[V] DOT  
4AV Video Input  
Brightness: 450cd/m<sup>2</sup> • Contrast: 500:1  
With Audio Function • CE Approved  
8 Pin Connect • 1950mm cable  
Dimensions: 177mm\*122mm\*26mm



Compatible with CA 9790 **CA 9791**

REVERSING AIDS

# REVERSING CAMERAS & MONITORS

## 5" (127MM) DIGITAL TFT MONITOR



DC 12-32 Volts • 5" Digital TFT Monitor  
NTSC/PAL (Auto Switch) • 800 RGB(H)\*480(V) DOT  
2AV Video Input  
Brightness: 300cd/m2 • Contrast: 350:1  
With Audio Function • ECE Approved  
9 Pin Connect • 1500mm cable  
Dimensions: 146mm\*110mm\*26mm

Compatible with CA 9770 **CA 9778**

## 7" (178mm) WIRELESS TFT LCD MONITOR



DC 9-32 Volts • 7" (178mm) TFT Digital Monitor  
NTSC/PAL (Auto Switch) • 800 RGB(H)\*480(V) DOT  
2 Video Input  
Brightness: 300cd/m2 • Contrast: 400:1  
No Audio Function • CE Approved  
4 Pin Connect • 1800mm cable  
Dimensions: 204mm\*141mm\*78mm

Compatible with CA 9780 **CA 9781**

## 9" HD COLOUR SAFETY MONITOR



12-32V • 9" [236mm] HD Monitor • NTSC/PAL System  
800 RGB(H) x 480 (V) Dot • 2 Way Video Input  
Brightness: 300cd/m2 / Contrast: 300:1  
With Audio, 1 Channel Input  
ECE Reg 10  
9 Pin Connect / 1500mm cable  
Dimensions: 236mm\*158mm\*28mm

Compatible with CA 9770 **CA 9777**

## 9" HD WIRELESS QUAD MONITOR



12-32V • 9" [236mm] Wireless 4 Split DVR Monitor  
NTSC/PAL System • 800 RGB(H) x 480(V) Dot  
DVR Recording Function • 4 Way Video Input  
Brightness: 450cd/m2 / Contrast: 500:1  
With Audio, 1 Channel Input  
ECE Reg 10 • 8 Pin Connect / 1950mm cable  
Dimensions: 236mm\*158mm\*28mm

Compatible with CA 9790 **CA 9793**

## 7" (178mm) TFT LCD MONITOR



12-32V • 7" (178mm) TFT LCD Monitor • NTSC/PAL System  
480 RGB(H) x 234 (V) Dot • 2 Way Video Input  
Brightness: 300cd/m2 / Contrast: 350:1  
No Audio  
9 Pin Connection / CE Approved  
Dimensions: 245mm\*110mm\*25mm

Compatible with CA 9772 **CA 9775**

## 10" QUAD COLOUR MONITOR

**NEW**



12-32V • 10.1" [256mm] Quad Split Digital HD Monitor  
1024 RGB (H) x 800 (V) / NTSC/PAL System  
4 Way Video Input  
Brightness: 450cd / m2 • Contrast: 500:1  
Audio: 1 Channel Input • 14 Pin Connect  
ECE R10 • IP54  
Dimensions: 352mm\*166mm\*32mm

Compatible with  
CA 9774, CA 9785 CA 9784, CA 9779, CA 9787, CA 9786 **CA 9798**

## 12" SPLIT SCREEN COLOUR MONITOR

**NEW**



12-32V • 12.2" [333mm] 3 Split Digital HD Monitor  
1024 RGB (H) x 310 (V) / NTSC/PAL System  
3 Way Video • Brightness: 400cd/m2 / Contrast: 500:1  
No Audio • 9 Pin Connection • ECE Approved R10 • IP54  
Dimensions: 333mm\*120mm\*29mm

Compatible with CA 9774, CA 9785  
CA 9784, CA 9779, CA 9787, CA 9786

**CA 9799**

## 5" WIRELESS COLOUR MONITOR

**NEW**



12-24V • 5" [127mm] Digital Monitor  
NTSC/PAL System  
800 RGB (H) x 480 (V) Dot • 1 Way Video Input  
Brightness: 500cd/m2 / Contrast: 1200:1  
No Audio • Suction Bracket Mount  
ECE Approved R10 • IP54  
Dimensions: 132mm\*88mm\*38mm

Compatible with CA 9745 **CA 9746**

## 4.3" COLOUR MONITOR



12-24V • 5" [127mm] Digital Panel  
480 RGB (H) x 272 (V) / NTSC/PAL System  
1 Way Video Input  
Brightness: 400cd/m2 / Contrast: 700:1  
No Audio • Cig Lighter Cabel Connection  
ECE Approved R10 • IP54  
Dimensions: 132mm\*88mm\*38mm

Compatible with CA 9742 **CA 9743**



WORKING  
DISPLAY  
ALSO  
AVAILABLE

REVERSING AIDS

# REVERSING CAMERAS & MONITORS

## COLOUR CAMERA



DC12V • No Audio • CMOS 1/4" Image Sensor  
 NTSC: 510\*492, PAL: 500\*582 • 420TVL  
 Built-In Lens: 1.4mm • Night Vision: 10m  
 120° Viewing Angle / Video Output: 1.0Vpp / 75Ω  
 Rated IP69 • ECE Reg 10  
 4 Pin Connect / 600mm cable  
 Dimensions: 18mm\*22mm\*22mm

Compatible with CA 9742 **CA 9788**

## COLOUR CAMERA



DC12V • No Audio • CMOS 1/4" Image Sensor  
 NTSC: 510\*492, PAL: 500\*582 • 420TVL  
 Built-In Lens: 1.4mm  
 120° Viewing Angle • Video Output: 1.0Vpp / 75Ω  
 Rated IP69 • EMC Approved  
 4 Pin Connect / 600mm cable  
 Dimensions: 16mm\*22mm\*38mm

Compatible with CA 9742 **CA 9744**

## COLOUR CAMERA



DC12-32V • With Audio • CMOS Image Sensor  
 NTSC: 720\*576, PAL: 720\*487 • 550TVL • Infrared 18 LEDs  
 Built-In Lens: 2.5mm • Night Vision: 10m  
 120° Viewing Angle • Video Output: 1.0Vpp / 75Ω  
 Rated IP69 • CE Approved  
 4 Pin Connect / 550mm cable  
 Dimensions: 72mm\*45mm\*60mm

Compatible with CA 9770 / 9772 **CA 9774**

## WIRELESS COLOUR CAMERA



DC12-32V • With Audio • CMOS 1058  
 NTSC: 976\*494, PAL: 976\*494 • 600TVL • Infrared 18 LEDs  
 Built-In Lens: 2.8mm • Night Vision: 15m  
 120° Viewing Angle • Video Output: 1.0Vpp / 75Ω  
 Wireless Signal 100m (unblocked) • Rated IP67  
 CE Approved • DC Connector / 650mm cable  
 Dimensions: 75mm\*63mm\*48mm

Compatible with CA 9790 / CA 9793 **CA 9797**

## WIRELESS COLOUR CAMERA



DC12V • No Audio • CMOS 1099  
 NTSC: 960\*576, PAL: 960\*576 • 600TVL • Infrared 18 LEDs  
 Built-In Lens: 2.8mm • Night Vision: 10m  
 120° Viewing Angle • Video Output: 1.0Vpp / 75Ω  
 Rated IP67 • CE Approved  
 4 Pin Connect / 450mm cable  
 Dimensions: 95mm\*70mm\*65mm

Compatible with CA 9780 **CA 9782**

## SIDE MOUNT COLOUR CAMERA



DC12V • No Audio • CMOS  
 NTSC: 720\*576, PAL: 720\*487 • 550TVL • Infrared 10 LEDs  
 Built-In Lens: 2.5mm • Night Vision: 10m  
 120° Viewing Angle • Video Output: 1.0Vpp / 75Ω  
 Rated IP69 • CE Approved  
 4 Pin Connect / 550mm cable  
 Dimensions: 73mm\*60mm\*51mm

Compatible with CA 9770 **CA 9785**

## SIDE MOUNT COLOUR CAMERA



DC12V • No Audio • CMOS  
 NTSC: 720\*576, PAL: 720\*487 • 550TVL • Infrared 12 LEDs  
 Built-In Lens: 2.5mm • Night Vision: 10m  
 120° Viewing Angle • Video Output: 1.0Vpp / 75Ω  
 Rated IP69 • CE Approved  
 4 Pin Connect / 550mm cable  
 Dimensions: 78mm\*68mm\*70mm

Compatible with CA 9770 **CA 9784**



## WIRELESS COLOUR CAMERA



12-24V • No Audio • CMOS 1/3"  
 NTSC: 960\*576, PAL: 960\*576 • 600TVL • Infrared 5 LEDs  
 Built-In Lens: 2.5mm • Night Vision: 8m  
 120° Viewing Angle • Video Output: 1.0Vpp / 75Ω  
 Rated IP69 • ECE Approved R10  
 DC Connector / 146mm cable • Wireless Signal: 50m  
 Dimensions: 65mm\*58mm\*43mm

Compatible with CA 9745 **CA 9747**

REVERSING AIDS



## MIRROR MOUNT COLOUR CAMERA



DC12V • No Audio • CMOS  
 NTSC: 733\*493, PAL: 733\*493 • 600TVL • Infrared 5 LEDs  
 Built-In Lens: 2.5mm • Night Vision: 10m  
 120° Viewing Angle • Video Output: 1.0Vpp / 75Ω  
 Rated IP69K • ECE Approved R10  
 4 Pin Aviation Connector / 650mm cable  
 Dimensions: 58mm\*60mm\*104.6mm

Compatible with CA 9773, CA 9778, CA 9777 **CA 9779**

## SIDE MOUNT COLOUR CAMERA



DC12V • No Audio • CMOS  
 NTSC: 960\*576, PAL: 960\*576 • 700TVL • Infrared 6 LEDs  
 Built-In Lens: 8.5mm • Night Vision: 10m  
 120° Viewing Angle • Video Output: 1.0Vpp / 75Ω  
 Rated IP69 • CE Approved  
 4 Pin Connect / 550mm cable  
 Dimensions: 50mm\*42mm\*70mm

Compatible with CA 9770 **CA 9787**

## DOME MOUNT COLOUR CAMERA



DC12V • No Audio • CMOS  
 NTSC: 720\*576, PAL: 720\*487 • 550TVL • Infrared 12 LEDs  
 Built-In Lens: 2.5mm • Night Vision: 10m  
 120° Viewing Angle • Video Output: 1.0Vpp / 75Ω  
 CE Approved  
 4 Pin Connect / 550mm cable  
 Dimensions: Ø95mm\*63mm\*Ø95mm

Compatible with CA 9770 **CA 9786**

**NEW**



## DUAL LENS COLOUR CAMERA

DC12V • No Audio • CMOS Image Sensor  
 NTSC: 733\*493, PAL: 733\*493 • 600TVL  
 Built-In Lens: 2.8mm • Night Vision: 10m  
 120° Viewing Angle / Video Output: 1.0Vpp / 75Ω  
 Rated IP69K • ECE Reg 10  
 4 Pin Aviation Connector / 650mm cable  
 Dimensions: 96mm\*60mm\*81.4mm

Compatible with CA 9773, CA 9778, CA 9777 **CA 9789**

## 4 PIN CONNECT EXTENSION CABLE

All Compatible with the CA 9770 / CA 9772



20 Mtrs **CA 9776**  
 5 Mtrs **CA 9776.05**  
 10 Mtrs **CA 9776.10**  
 15 Mtrs **CA 9776.15**

## SUZIE CABLE KIT

2m Spring Cable • Coil  
 2 x 7 Pin Female Connection  
 Compatible with  
 the CA 9770 / CA 9772



**CA 9757**

## UNIVERSAL STAND FOR MONITOR FAN TYPE

Compatible with  
 the CA 9770 / CA 9772



**CA 9689**

## UNIVERSAL STAND FOR MONITOR SUCTION TYPE

Compatible with  
 the CA 9770 / CA 9772



**CA 9657**

## ELECTRIC HORN



12V **BLEP 817**  
 24V **BLEP 816**

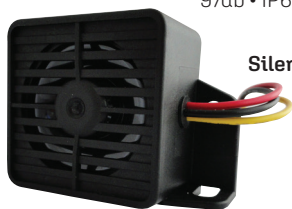
## WARNING BUZZER



12V / BLACK **BLEP 780**  
 24V / RED **BLEP 781**

## BACK UP REVERSING ALARM

97db • IP67 • REG 10 • 12-24V  
 Tone Type: BEEP  
 Silent Night Function



104\*41\*69mm **EP 1207**

## BACK UP REVERSING ALARM

107db • IP67 • REG 10 • 12-24V  
 Tone Type: BEEP



99\*41\*63mm **EP 1208**

## WHITE NOISE REVERSING ALARM

97db • IP67 • REG 10 • 12-24V  
 Tone Type: WHITE NOISE



104\*41\*69mm **EP 1209**

## WHITE NOISE REVERSING ALARM

107db • IP67 • REG 10 • 12-24V  
 Tone Type:  
 WHITE NOISE



127\*96\*78mm **EP 1211**

OUR ELECTRICAL RANGE  
 Auto Cable - Jump Leads - Cable Ties  
 Wiring Terminals - Switches  
 Fuses - Sockets Etc.  
 @  
**WWW.247LIGHTING.NET**



Unit 4,  
Lakelands Enterprise Centre,  
Ballydangan, Athlone,  
Co. Roscommon,  
N37 H5Y0, Ireland.

IRELAND: 090 9673232

UK: 0121 6474857

INTL: ++353 90 9673232

[sales@247lighting.net](mailto:sales@247lighting.net)

[www.247lighting.net](http://www.247lighting.net)



Ireland is still a fully fledged member of the European Union.